

Non Injured Complete Lower (NICL)

Quick Start Guide

The Non Injured Complete Lower (NICL) is a ruggedized lower body unit medical trainer that takes realism to the next level. The NICL features a fully intact lower body that combined with any AirwayPlus Lifecast (APL) Upper unit forms a complete system. The NICL allows trainees to stay focused on upper body injuries while providing the realism needed for treating an entire simulated human patient. The NICL can withstand nearly any weather condition, making it ideally suited for First Responder, Tactical Combat Casualty Care (TCCC) and Combat Lifesaver training courses.

1 Unpack the case

LOWER UNIT CASE

(Optional accessories where noted - some items may not be included)

NICL LOWER UNIT

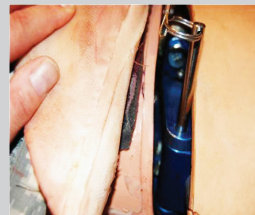


One Gallon "Blood Paste" bucket with pre-mixed coagulated blood (optional)

- Quick Start Guide (this guide)

2 Attach upper unit (optional)

The NICL lower unit can be attached to a TraumaFX upper unit (optional). Attach a TraumaFX upper unit in the following manner:



a. Fold back the chest fascia over the upper body to expose the quick connect system. Ensure bracket swings forward.

b. Bring upper and lower units together and insert the quick release pins into the bracket holes.

c. Pull down the chest fascia to cover the space between the upper and lower units.



Disassembling from the upper unit

To separate the lower and upper units, fold back the chest fascia over the abdomen of the upper body unit to expose the quick connect system. Slightly lift up on the lower

unit to relieve the tension. The pins can now easily be removed to separate the upper and lower units.

3 Prep for training

Below is a brief summary of available simulation options.

- a.** Flesh chunks, Injured Hands (TraumaFX upper unit) and a severed leg (left or Right) are available as optional accessories to enhance the realism of the crisis simulation.
- b.** Blood paste can be applied to enhance the realism of the NICL wounds and various surfaces.

4 After use care and maintenance

To keep NICL operating as designed, the following preventive maintenance actions must be completed after each training session.

- a.** Wash skin and wounds with water. If stain persists, use a mild detergent and gently rub with a soft, damp cloth. DO NOT vigorously scrub the skin or surface area as this can cause permanent damage to the skin.
- b.** Inspect NICL for small skin cuts and repair if found.

NOTE: Blood paste is perishable, organic material with a shelf life dependant upon storage conditions. Store with lid on in a cool, dark place. Blood paste is cellulose based and could attract insects

NOT INTENDED FOR HUMAN CONSUMPTION.

5 Safety instructions

Possible Reaction to Synthetic Blood Mix

DO NOT ingest blood paste, dry blood mix or mixed blood. The chemical components may cause skin and eye irritation for some users. Avoid ingestion or inhalation. If eye contact occurs, immediately flush eyes with water for 15 minutes. Seek medical attention if irritation occurs. If skin contact occurs and the skin becomes irritated, wash with soap and water.



CAUTION: Blood mix in powder or liquid form may stain clothes. If clothing comes into contact with blood mix, treat affected area with stain remover and/or laundry detergent within 24 hours for best removal results.

Contact Information

TraumaFX Solutions, Inc.

Petaluma CA, San Antonio TX, Atlanta GA

Customer Support

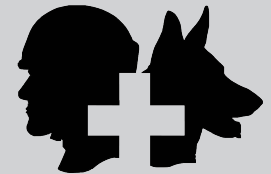
U.S. Toll Free: 1-800-200-7465

International: +1 703-245-7350

MATTsupport@traumafx.net

TRAUMA F/X®

Improving Survivability



© 2020 TraumaFX Solutions, Inc.